

ILP-4200

SPS integration



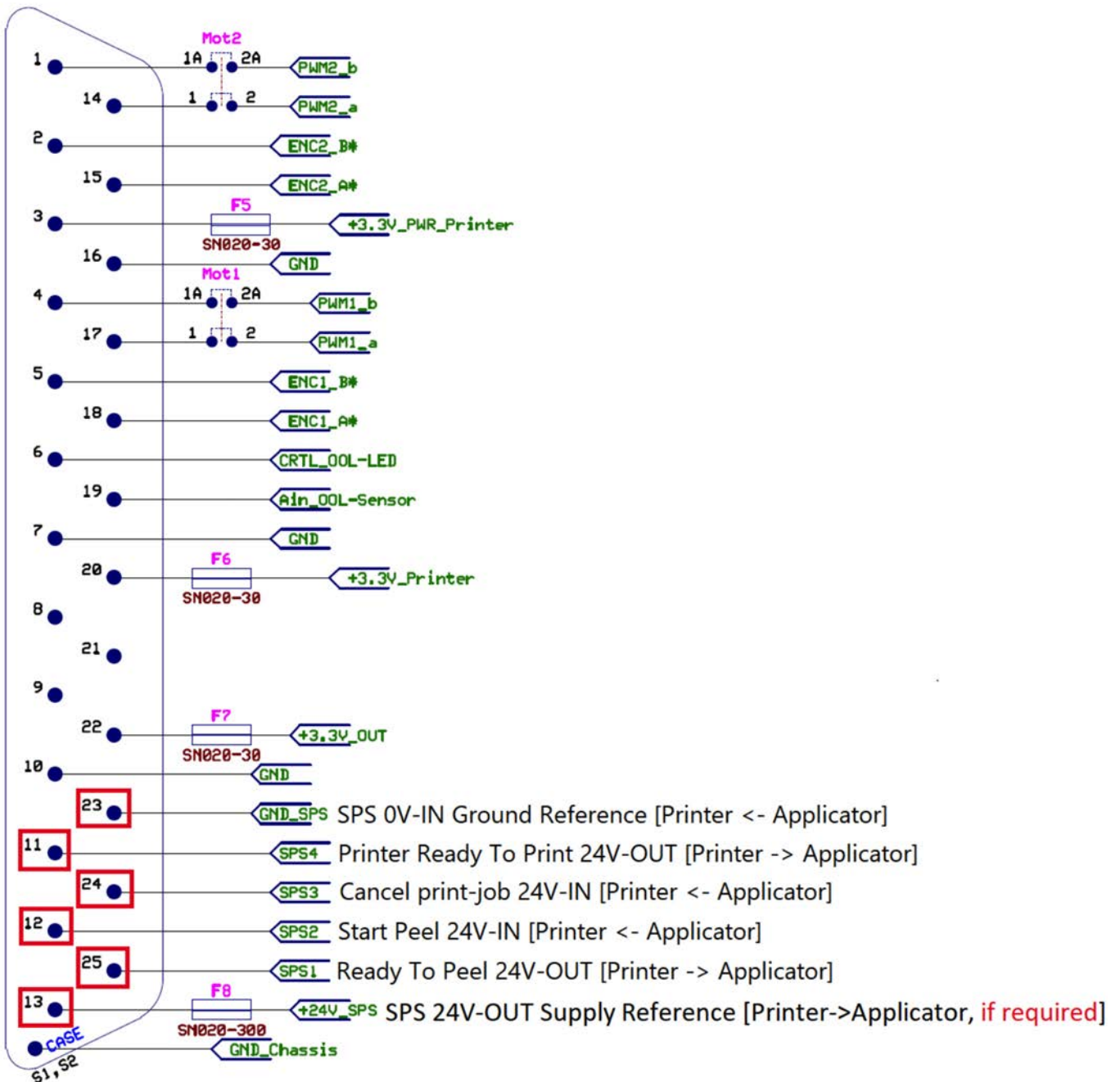
SPS / GPIO Anschluß

24V SPS-Signale : SUB-D 25-polige Schnittstelle am Drucker

ILP 4200 [PEELER - Applicator Master]

SPS-Interface

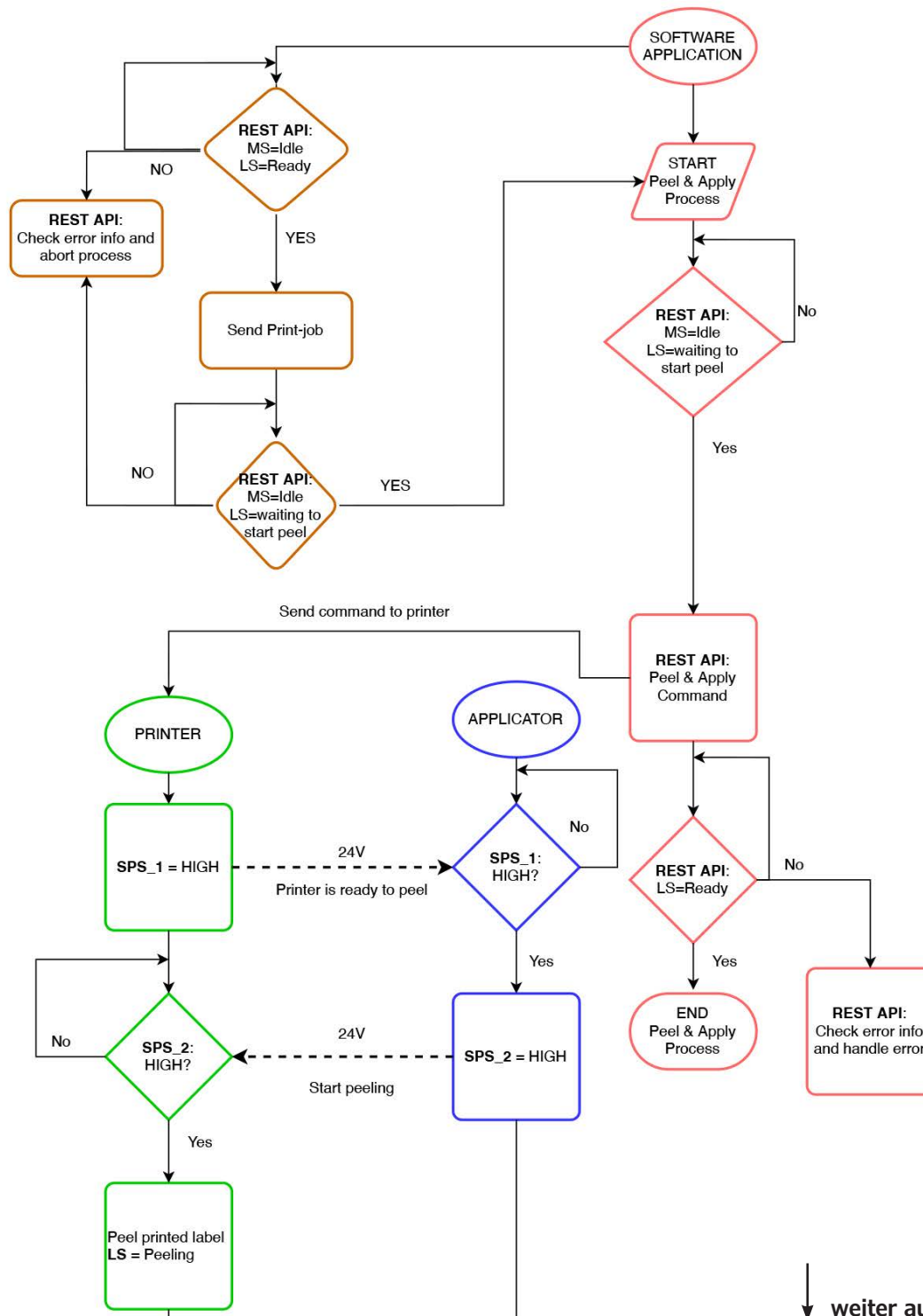
SUB-D 25 90° F



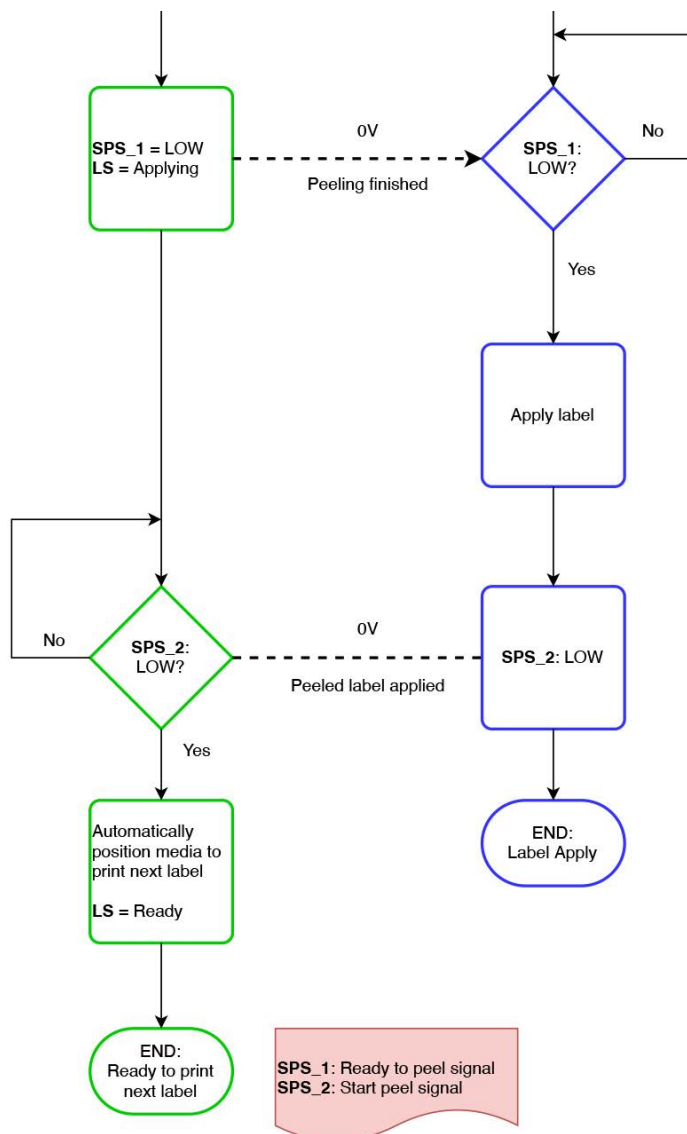
SPS-Signal-Pin-Definition an der Sub-D 25-Schnittstelle des Druckers

Pin #	Name	Direction [Printer]	Level	Comments
23	GND	IN		Reference common ground
11	Ready to print	OUT	HIGH	Printer is ready to print next job
			LOW	Printer is busy
24	Cancel job	IN	HIGH	Cancels current print-job  1500 milli-sec pulse to be safe
			LOW	Normal operation
25	Ready to peel	OUT	HIGH	Printed label is at peel start position and printer is ready to peel the label
			LOW	Printer is not ready to peel. Normal operation
			HIGH → LOW  Printed label is peeled completely. Applicator can pick up the label	
12	Start peel	IN	HIGH	Start to peel printed label
			LOW	Normal operation
			HIGH → LOW  Peeled label was picked up by applicator and/or applied successfully. Printer can now move the next label back to print position [position media] If the HIGH to LOW transition does not happen within a certain time limit, printer reports error that applicator failed and then automatically moves next label back to print position [position media]	

Nachstehend finden Sie ein Beispiel für ein Flussdiagramm, das zeigt, wie die Softwareanwendung des Kunden und das SPS-System die gesamte Druck-, Abzieh- und Anbringungssequenz ausführen können.



↓ weiter auf nächster Seite



Druckauftrag senden und Abzieh- und Auftragesequenz durchführen